



OAKFIELD



Rocks Park Road, Uckfield TN22 2AX

Price Guide £450,000



**Rocks Park Road, Uckfield
TN22 2AX**

Price Range £450,000 - £475,000

This exceptional three-bedroom semi-detached family home offers modern living in a highly sought-after residential estate.

Beautifully finished throughout, the property occupies a desirable position and includes a private driveway, a single garage with an electric roller door, and a professionally landscaped rear garden.

The current owners have significantly upgraded and reconfigured the property to create stylish and largely open-plan living on the ground floor.

Upon entering, you are greeted by a welcoming hallway with bamboo flooring that extends throughout the ground floor, along with a convenient cloakroom.

The sitting room is generously proportioned and features a striking granite-tiled feature wall, while the impressive kitchen/dining room has been designed to a high standard.

This space includes a beautifully fitted kitchen with a matching range of units, integrated appliances, a peninsula with bar seating, and mood-enhancing LED lighting.

The dining area overlooks the secluded rear garden, accessed via sleek bi-fold doors that open onto a decked terrace.

Upstairs, the first floor boasts a spacious landing leading to three well-proportioned double bedrooms, including a principal bedroom measuring approximately 15'11 x 9'4.

The contemporary family bathroom is elegantly finished and features a modern enclosed bath with a seperate shower.

To the front, the property benefits from a private driveway and access to the garage, while the rear garden provides a tranquil retreat, complete with a raised decked terrace, a level lawn bordered by palm trees, and secure close board fencing.

Personal access to the garage is also available via a set of double doors from the garden.





Sitting Room

15'4 x 11'1 (4.67m x 3.38m)

Kitchen/Dining Room

15'11 x 11'5 (4.85m x 3.48m)

Bedroom 1

15'11 x 9'4 (4.85m x 2.84m)

Bedroom 2

11'6 x 9'0 (3.51m x 2.74m)

Bedroom 3

11'6 x 7'3 (3.51m x 2.21m)

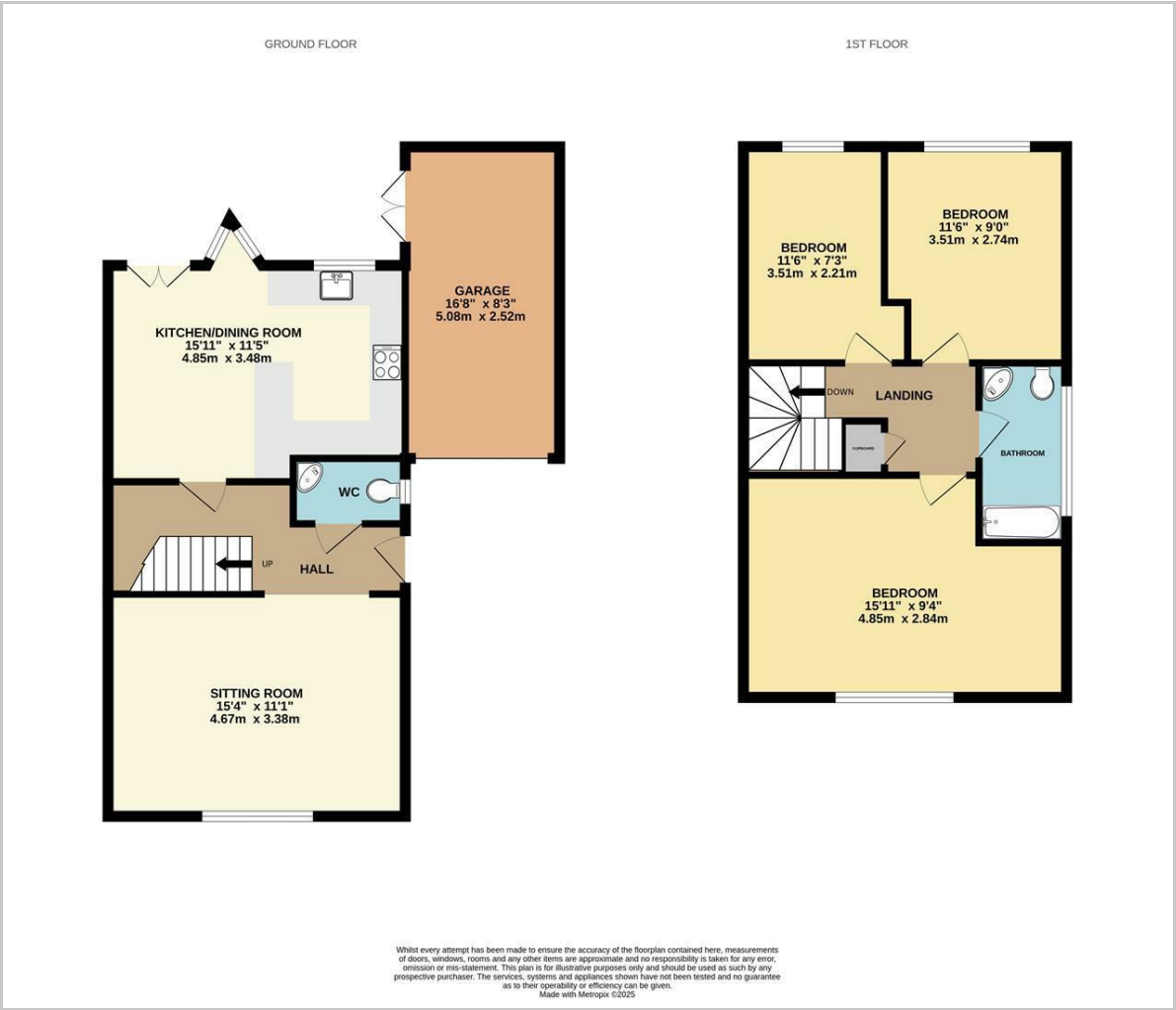
Garage

16'8 x 8'3 (5.08m x 2.51m)

Council Tax Band - D £2,608 per annum



Floor Plan

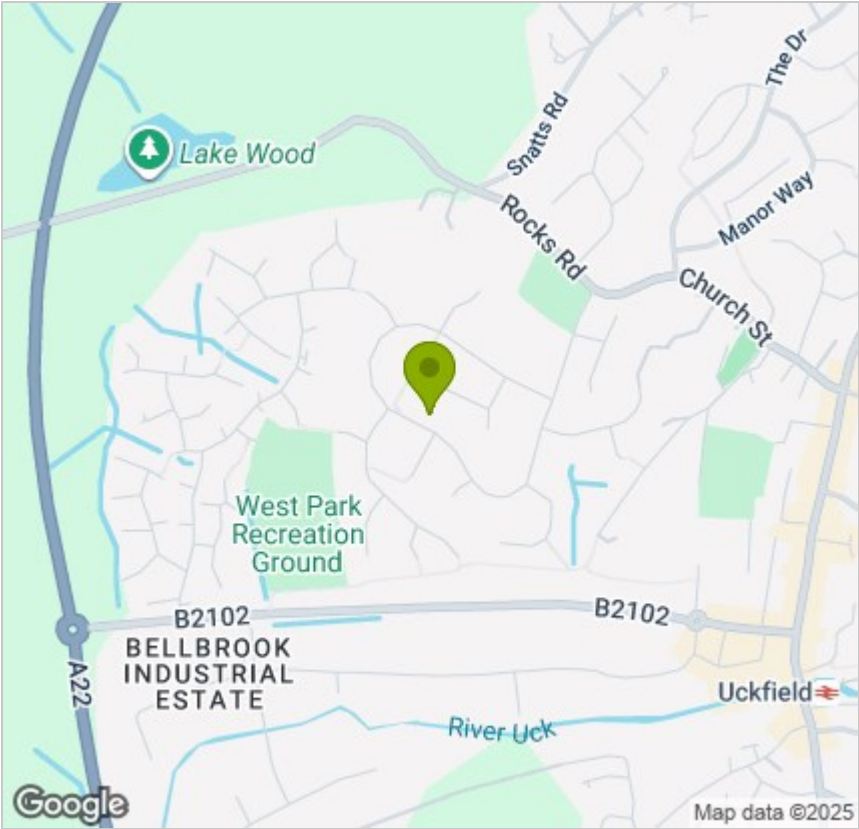


Viewing

Please contact us on 01825 762132 if you wish to arrange a viewing appointment for this property or require further information.

These particulars, whilst believed to be accurate are set out as a general outline only for guidance and do not constitute any part of an offer or contract. Intending purchasers should not rely on them as statements of representation of fact, but must satisfy themselves by inspection or otherwise as to their accuracy. No person in this firms employment has the authority to make or give any representation or warranty in respect of the property.

Area Map



Energy Efficiency Graph

